

# ORACLE TRANSPORTATION INTELLIGENCE CLOUD



Effective decision making is vital to the success of any logistics organization. Oracle Transportation Intelligence (TI) Cloud, Oracle's transportation-focused business intelligence solution, promotes better supply chain decisions by providing greater insight into both internal operations and trading partner performance. Oracle Transportation Intelligence Cloud provides you with the information needed to understand what's happening in your supply chain, so you can make corrections and achieve your organizational goals.

## KEY FEATURES

- User-defined metrics
- Configurable reports and dashboards
- Ad-hoc querying and reporting of your logistics information
- Monitor transportation metrics against business and industry targets, benchmarks, and forecasts
- Drill-down from metrics into operational data
- Role-based alerting and notification

## KEY BENEFITS

- Single, consistent view of transportation data
- Quickly identify positive and negative trends in transportation operations
- Influence operational decisions based on historic data
- Promote effective, impartial decision making, at multiple levels of the organization
- Provide granular visibility into transportation data and metrics, allowing better measurement, control, and adaptability
- Raise awareness to the impact of logistics on the overall success of the organization
- Encourage cross-functional information sharing
- Embedded within the Oracle

## Measure Performance, Monitor Trends, Take Action

Setting and tracking goals within your transportation organization are keys to reducing costs and improving customer service. Oracle Transportation Intelligence Cloud leverages extensive transportation data from Oracle Transportation Management to provide detailed analysis of key transportation metrics – metrics that impact your organization's profitability. Oracle Transportation Intelligence Cloud offers user-friendly dashboards that monitor key performance indicators while also allowing seamless navigation between historical and operational information – providing visibility into detailed causal data and leading to more informed operational decision making. In other words, the solution provides an organization with the ability to quickly analyze, adapt, and execute changes in day-to-day operations in order to improve performance.

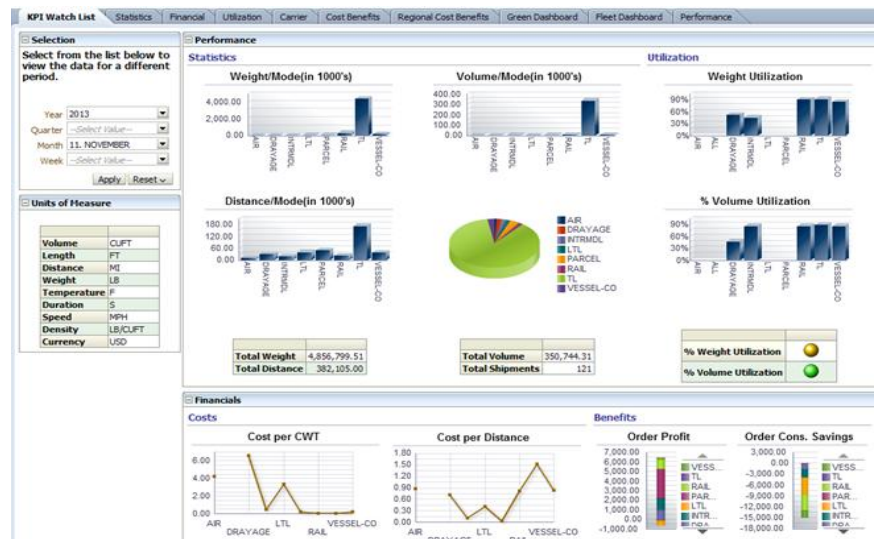


Figure 1. Transportation metrics are defined, managed, and viewed through user-defined reports and dashboards.

Transportation Management Cloud platform

- Eliminate need to manage and maintain an independent data warehouse

#### RELATED PRODUCTS

Transportation Intelligence is a key component of Oracle Transportation Management Cloud and the Oracle suite of Logistics Cloud solutions.

Oracle Transportation Management Cloud was built to provide a single, complete solution to manage all aspects of transportation and logistics. The following options are also available with Oracle Transportation Management Cloud:

- Forwarding and Brokerage Operations Cloud
- Freight Payment, Billing, and Claims Cloud
- Transportation Intelligence Cloud
- Logistics Inventory Visibility Cloud
- Transportation Cooperative Routing Cloud
- Transportation Operational Planning Cloud
- Transportation Sourcing Cloud

Other Related Products:

- Oracle Global Trade Management Cloud
- Oracle Customs Management Cloud
- Oracle Trade Compliance Cloud
- Oracle Global Trade Intelligence Cloud

## Defining Key Performance Indicators

Oracle Transportation Intelligence Cloud offers the breadth and depth to provide visibility to the right measurements for your organization's success. Transportation metrics can be defined for all relevant business needs. TI includes flexible analysis for:

- Orders, Shipments, Lines, and Stops
- Invoices and Invoice Lines
- Carrier Performance / Scorecards
- Sustainability
- Tracking Events
- Carrier Commitments
- Claims
- Quotes
- Drivers
- Planning and System Activity

## The Right Information, in the Right Place, for the Right User





Oracle Transportation Intelligence Cloud provides the information needed to support a transportation executive's long term objectives, a manager's medium and short term goals, as well as a transportation analyst's day-to-day decision making needs. Metrics, reports, and dashboards can be created and configured to support a variety of needs while data can be sliced and diced accordingly and can even be accessed via mobile devices. Transportation Intelligence provides embedded business intelligence into your operational transportation environment. It provides actionable insight, coordinated with fact-based decision support, together providing the knowledge needed to keep transportation operations moving in the right direction.

#### CONTACT US

For more information about Oracle Transportation Intelligence Cloud, visit [oracle.com](http://oracle.com) or call +1.800.ORACLE1 to speak to an Oracle representative.



#### CONNECT WITH US

-  [blogs.oracle.com/oracle](http://blogs.oracle.com/oracle)
-  [facebook.com/oracle](http://facebook.com/oracle)
-  [twitter.com/oracle](http://twitter.com/oracle)
-  [oracle.com](http://oracle.com)

#### Integrated Cloud Applications & Platform Services

Copyright © 2016, Oracle and/or its affiliates. All rights reserved. This document is provided for information purposes only, and the contents hereof are subject to change without notice. This document is not warranted to be error-free, nor subject to any other warranties or conditions, whether expressed orally or implied in law, including implied warranties and conditions of merchantability or fitness for a particular purpose. We specifically disclaim any liability with respect to this document, and no contractual obligations are formed either directly or indirectly by this document. This document may not be reproduced or transmitted in any form or by any means, electronic or mechanical, for any purpose, without our prior written permission.

Oracle and Java are registered trademarks of Oracle and/or its affiliates. Other names may be trademarks of their respective owners.

Intel and Intel Xeon are trademarks or registered trademarks of Intel Corporation. All SPARC trademarks are used under license and are trademarks or registered trademarks of SPARC International, Inc. AMD, Opteron, the AMD logo, and the AMD Opteron logo are trademarks or registered trademarks of Advanced Micro Devices. UNIX is a registered trademark of The Open Group. 0316